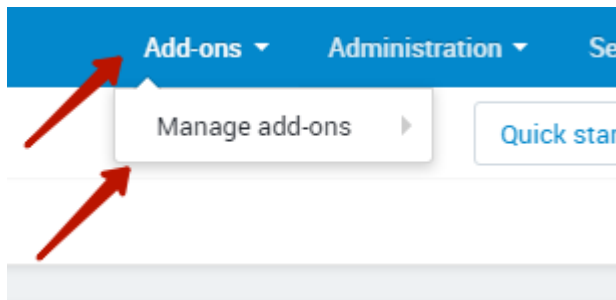
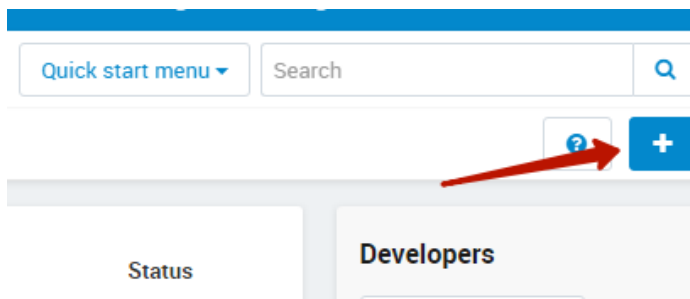


Installing the module

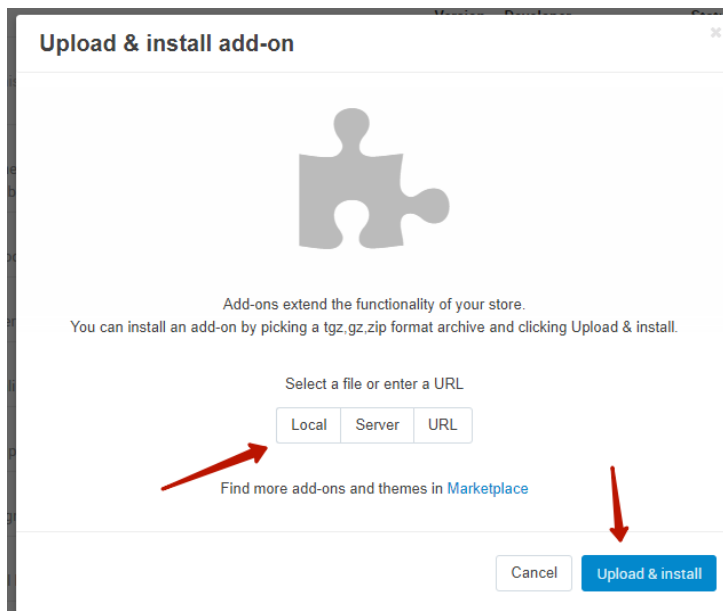
1. Let's go to the "Add-ons" >> "Manage add-ons"



2. On the right side, click on the button with the plus sign



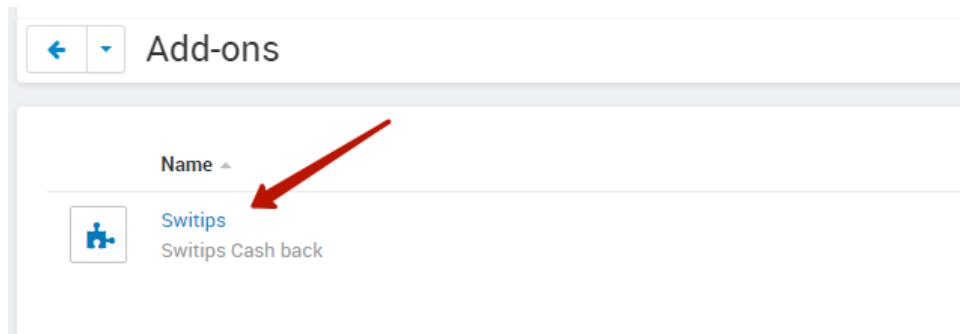
Select the archive with the module on the computer and click "Upload & install"



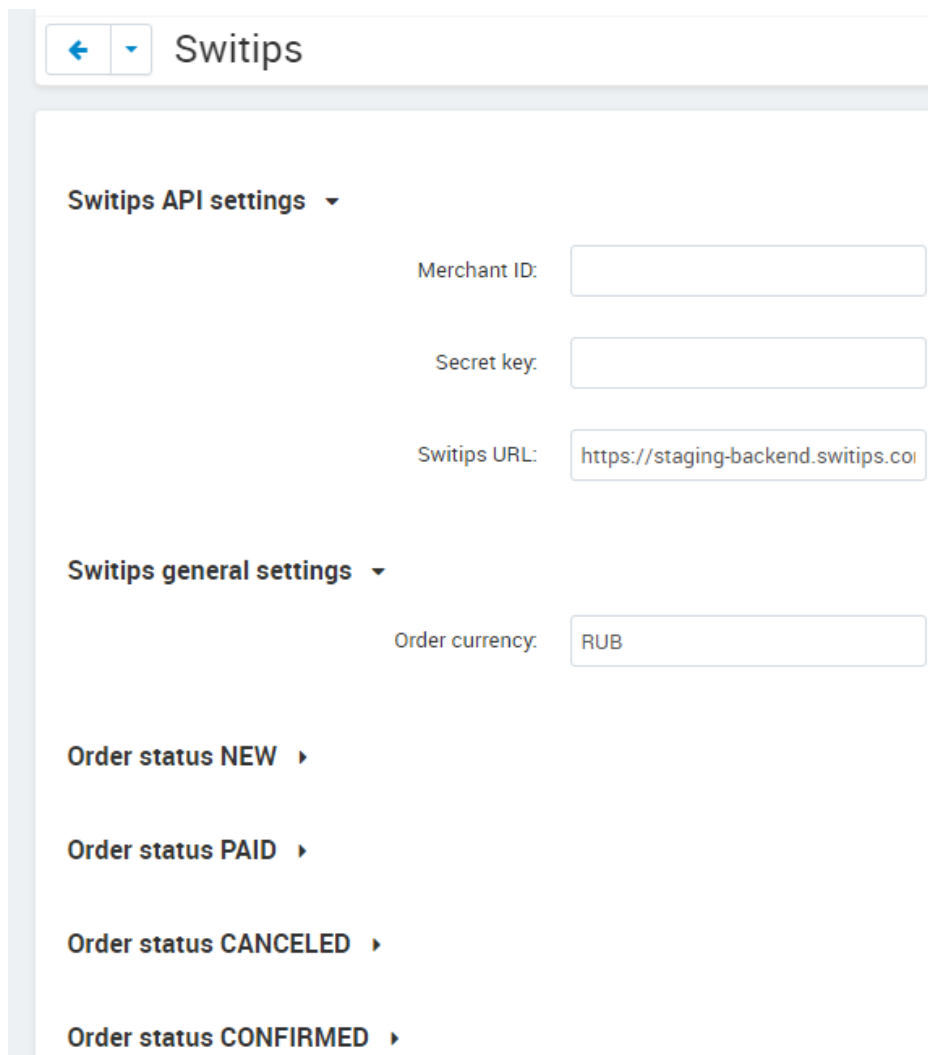
3. Let's wait until the installation is complete

Module configuration

1. Let's go to the "Add-ons" >> "Manage add-ons". Find our module in the list and click on it.



2. The page with the module settings has opened



Under the settings are the statuses that the Switips service accepts. Match store statuses with Switips statuses. Example:

Order status NEW ▾

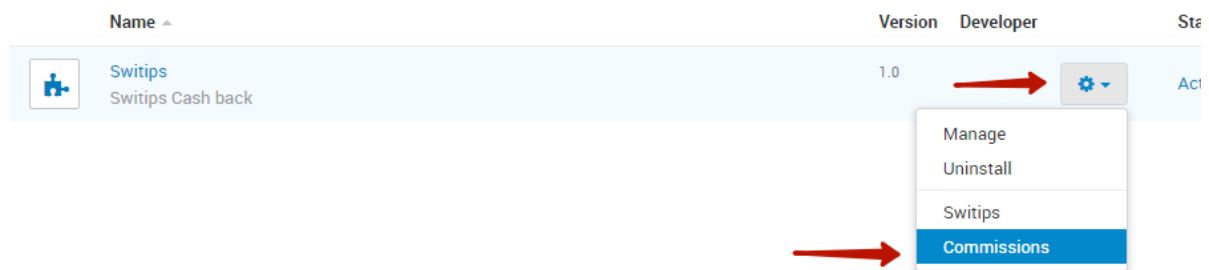
Selected fields

Available fields

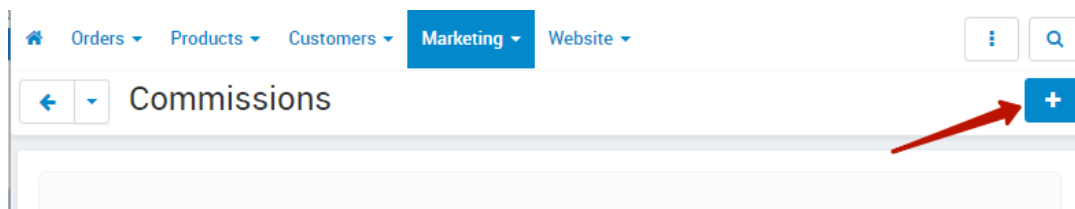
Открыт

Обработан
Выполнен
Неудача
Отклонен
Отложен
Аннулирован
Ожидает звонка
На удержании
Возвращено

3. The size of the commission can be set by going to the "Commissions" section



4. The size of the commission can be set by going to the "Commissions" section



In the commission editor on the "General" tab, specify an arbitrary name and size of the commission.

←

▼

New commission

General

Conditions

Name: *

Commission: *

When you indicate the% sign, the commission amount will be calculated as a percentage of the value of the goods.
Example: 10%

Status: *

Active

Hidden

Disabled

On the “Conditions” tab, you can specify the condition under which the commission will be tied to a product or category.

←

▼

New commission

General

Conditions

+ Add condition

—

▼

—

Categories

Products